

A photograph of a community event, likely a concert or festival. In the background, a brass band in white uniforms is playing. The audience, consisting of people of various ages, is seated in folding chairs on a grassy lawn. In the foreground, there are colorful flowers, including red and yellow snapdragons. The scene is outdoors, with white tents visible in the background.

ST15

THE STONE DIRECTORY

2025

www.st15directory.com

BROUGHT TO YOU BY THE STONE & ECCLESHALL GAZETTE



**LEIGHTON HALL
AUCTIONS**

AUCTIONEERS & VALUERS OF FINE ANTIQUES & JEWELLERY

01785 561799

UNIT 26 EMERALD WAY, STONE, ST15 0SR
WWW.LEIGHTONHALLAUCTIONS.COM

Welcome to the 2025 ST15 Directory

Welcome to the 2025 edition of The ST15 Directory, a companion publication for the Stone & Eccleshall Gazette.

The ST15 postcode covers Stone, plus Hilderstone, Oulton, Moddershall, Swynnerton & Yarnfield.

We print 10,000 copies of this directory, and deliver them to homes and businesses within the ST15 postcode area.

The directory gives you instant access to all the local telephone numbers and website addresses you'll ever need, plus it's crammed full of **local businesses and tradespeople**, very handy for when you next need a plumber, electrician, or maybe a new car perhaps?

If you ever misplace this copy, you can find an online version at www.st15directory.com

If you run a not for profit organisation that we have not listed, or if for any reason the number or website we have published is not correct, please email hello@st15directory.com and we will amend it for the 2026 edition.

Similarly, if your business hasn't been included, and you'd like it to be, email us and we'll get back to you with the advertising costs.

Tel: 07514 967890

www.st15directory.com

Published by the Stone Gazette Ltd. All Rights Reserved © ST15 Directory



**Photography throughout courtesy
and copyright of Martin Robinson**



@martinrobinson2

THE STONE & ECCLESHALL *Gazette*

The Stone & Eccleshall Gazette is hand delivered bi-monthly to **13,400 homes** in Stone, Eccleshall and the surrounding areas.

You can also read it online by visiting
www.stonegazette.com

**Advertising with us could make a
REAL DIFFERENCE to your business
in 2025**

**Call us today on 07514 967 890
or email: dan@stonegazette.com**



Stone & Eccleshall's Favourite Monthly Read

Enjoy exploring Stone and its' many places of historic interest, boutiques, stylish places to eat, drink, exciting festivals and specialist markets.

STONE PAST AND PRESENT

Stone's existence as a small settlement with a church, situated alongside the river Trent, was recorded as early as 670AD. The church was replaced in 1135 by an Augustinian Priory due to its position on the ancient road from Chester to London and the availability of a permanent supply of clean water from Scotch Brook.

The development of Stone as a medieval market town had its origins in the presence of the Priory and the market charter, granted by Henry III in 1251. A trading community began to develop around regular markets and fairs and is reflected in the layout of the town centre which has several long and narrow 'luggage tenements' stretching back on both sides of the High Street.

The Priory was destroyed during the 'dissolution of the monasteries' but Stone continued to thrive and during the 17th and 18th centuries became an important transport centre between London and the North and Ireland with as many as 38 coaches arriving daily at several bustling inns. Its growth accelerated following the construction of the Trent and Mersey Canal during the 1770's, an event which turned the town, according to one contemporary report, into 'a busy inland sea port'.

★ GRANVILLE SQUARE



Granville Square has been known as Pump Square but was renamed in honour of Granville Leveson-Gower, 2nd Earl Granville, a Victorian statesman and Lord of Stonepark and features in many photographs of historic Stone. It is overlooked by a large plane tree planted in 1901 to commemorate the coronation of King Edward VII. The Square is the site of Stone's War Memorial designed by sculptor Albert Toft and unveiled in January 1921 by Lord Dartmouth, Lord Lieutenant of the County. The original plaques bear the names of the 126 Stone men who lost their lives during the WW1. Later plaques were added in memory of those lost during WW2. Behind the Square lies the 'Poste of Stone', originally the town's General Post Office.

★ THE CROWN HOTEL



The Crown Hotel stands at the centre of the High Street adjacent to Market Square and is a 3 storey Grade II* listed Georgian building dating to 1778. Earl Gower of Trentham commissioned architect Henry Holland to draw up plans for the Hotel after the original had been destroyed by fire. Originally known as the Crown Inn, the hotel was the venue for the formation of the Trent and Mersey Canal Company and an important staging post for passenger and mail coaches travelling the London-Holyhead and London-Carlisle routes.

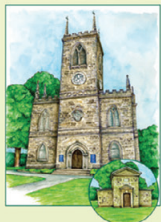
The Hotel was once owned by John Joule & Sons and has seen visits by many notable persons and celebrities including footballers, stars of stage and screen and politicians from the U.K. and overseas.

★ CUMBERLAND HOUSE



Cumberland House is situated in the (lower) High Street and is a fine example of a 3 storey Grade II listed Georgian town house with an imposing entrance surrounded by Doric half-columns. Note the 'candle snuffer' to the right of the main entrance. It was named after Prince William, Duke of Cumberland who lodged there in 1745 when his army camped on the 'Common Plott' before moving to intercepting a Jacobite army advancing southwards towards London. Cumberland House is now home to a GP Practice.

★ ST MICHAEL & ST WULFAD CHURCH



St Michael & St Wulfad is the parish church of Stone. It is Grade II* listed and built in 1758 to replace the old Priory Church. It is a fine example of an 18th Century church in the Early Gothic Revival style with many surviving fittings and an excellent collection of Kempe glass. The church also contains the 12th century seal matrix from Stone Priory and a painting of St. Michael by portraitist Sir William Beechey. At the rear of the church is the Jervis Family Mausoleum containing the remains of the famous naval hero John Jervis, Earl of St. Vincent, victor at the battle of Cape St. Vincent. There is also a fine memorial to him surmounted by a bust by leading portrait sculptor, Sir Francis Chantrey.

Brewing had taken place in Stone since the foundation of the Priory and now expanded with the opening of 2 local breweries, John Joule and Sons (1780) and Montgomery & Co. Boot and shoe-making also developed rapidly and by 1851 there were 16 manufacturers of footwear located in the town, supplied by tanneries situated at the south end of Crown Street.

The arrival of the railway in the 1830's provided another boost to growth and Stone became a desirable location for those wishing to escape the increasing pollution of the major conurbations.

Modern day Stone is a vibrant canal and market town with a strong community spirit and notable heritage assets. Its historic centre comprises mainly Georgian and Victorian buildings and monuments, more than 50 of which are listed by Historic England.

Stone offers the visitor an interesting range of shopping and leisure experiences, including popular festivals and events and the opportunity to explore its parks, canal and riverside walks and the Crown Meadow Nature Reserve.

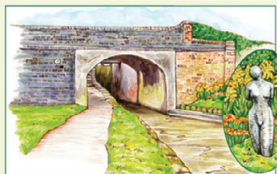
★ OLD JOULE'S BREWERY WAREHOUSE



The former 'Ale Stores and Stables' situated alongside the Trent & Mersey Canal were originally constructed in 1881 for the canal company but later acquired by local brewer Joule and Sons. They illustrate the importance of canal and horse drawn transport during a period when Joules sold their beers throughout the U.K and exported to North America and Australia. The canal was used for transport to the ports of Liverpool and Hull for onward shipment.

The buildings are Grade II listed and constructed of red brick with decorative bandings in Staffordshire blue brick. There is a lintel inscribed 'John Joule & Sons, 1881' and 5 loading bays. In the upper gable of each is a roundel and red cross illustrating the use of branding during the period. The buildings are now an Engineering Works.

★ WORKHOUSE BRIDGE & CHRISTINA SCULPTURE



Workhouse Bridge (No. 94) is Grade II listed and designed by the engineer James Brindley. It was completed between 1771 and 1772.

The bridge comprises an elliptical arch with plastering and a brick parapet. It connected the Town Centre with the old Stone Workhouse which now houses private residences.

The small sculpture on the bank to the right

commemorates Christina Collins who took passage in July 1839 from Preston Brook to London. The boat's crew took to drinking. She feared for her safety and reported her concerns to the Toll Office in Stone. Continuing on her journey she was raped and thrown overboard between Stone and Rugeley. Two of the crew were hanged for her murder at Stafford and a third transported to Australia.

★ OLD WALTON BRIDGE



Old Walton Bridge spans the River Trent on Stafford Street. It is a Grade II listed stone built structure dating to medieval times with elements of 17th or 18th rebuilding.

It comprises 2 main arches and 3 smaller flood arches to the sides and is approximately 60m long and 5m wide.

It was superseded by a new wider road bridge in 1984 after increasing traffic flows became restricted by its width.

The bridge can be approached across the Crown Meadow Nature Reserve or along Stafford Street past Westbridge Park.

Stone Town Council
15 Station Road, Stone, Staffordshire. ST15 8JP
Tel: 01785 619740

All images ©Stone Town Council

Stone Town Centre



2025

January						
S	M	T	W	T	F	S
			1	2	3	4
5	6	7	8	9	10	11
12	13	14	15	16	17	18
19	20	21	22	23	24	25
26	27	28	29	30	31	

February						
S	M	T	W	T	F	S
						1
2	3	4	5	6	7	8
9	10	11	12	13	14	15
16	17	18	19	20	21	22
23	24	25	26	27	28	

March						
S	M	T	W	T	F	S
						1
2	3	4	5	6	7	8
9	10	11	12	13	14	15
16	17	18	19	20	21	22
23	24	25	26	27	28	29
30	31					

April						
S	M	T	W	T	F	S
		1	2	3	4	5
6	7	8	9	10	11	12
13	14	15	16	17	18	19
20	21	22	23	24	25	26
27	28	29	30			

May						
S	M	T	W	T	F	S
				1	2	3
4	5	6	7	8	9	10
11	12	13	14	15	16	17
18	19	20	21	22	23	24
25	26	27	28	29	30	31

June						
S	M	T	W	T	F	S
1	2	3	4	5	6	7
8	9	10	11	12	13	14
15	16	17	18	19	20	21
22	23	24	25	26	27	28
29	30					

July						
S	M	T	W	T	F	S
		1	2	3	4	5
6	7	8	9	10	11	12
13	14	15	16	17	18	19
20	21	22	23	24	25	26
27	28	29	30	31		

August						
S	M	T	W	T	F	S
					1	2
3	4	5	6	7	8	9
10	11	12	13	14	15	16
17	18	19	20	21	22	23
24	25	26	27	28	29	30
31						

September						
S	M	T	W	T	F	S
	1	2	3	4	5	6
7	8	10	11	12	13	14
15	16	17	18	19	20	21
22	23	24	25	26	27	28
29	30					

October						
S	M	T	W	T	F	S
			1	2	3	4
5	6	7	8	9	10	11
12	13	14	15	16	17	18
19	20	21	22	23	24	25
26	27	28	29	30	31	

November						
S	M	T	W	T	F	S
						1
2	3	4	5	6	7	8
9	10	11	12	13	14	15
16	17	18	19	20	21	22
23	24	25	26	27	28	29
30						

December						
S	M	T	W	T	F	S
	1	2	3	4	5	6
7	8	10	11	12	13	14
15	16	17	18	19	20	21
22	23	24	25	26	27	28
29	30	31				

ST15

*Really Useful
Numbers*



Really useful numbers...

Emergencies, Helplines & Family Health

Abbey House Dentists	01785 818037
	www.abbeyhousedental.com
Age Concern (Stone & District)	01785 817906
	https://age-concern-stone.chessck.co.uk/
Alcoholics Anonymous.....	0800 9177 650
	www.alcoholics-anonymous.org.uk
Birchall & Watson Chemists	01785 812597
Birchall & Watson, Walton Pharmacy	01785 812059
Boots the Chemist	01785 813277
	www.boots.com
Cancer Research Stone Shop.....	01785 811070
	www.cancerresearchuk.org
Cannock Chase Hospital.....	01543 572757
	www.royalwolverhamptonhospitals.nhs.uk
County Hospital (Stafford).....	01785 257731
	www.uhnm.nhs.uk
CRIMESTOPPERS	0800 555 111
	www.crimestoppers-uk.org
Cumberland House Surgery	01785 813538
	www.cumberlandhouse.org.uk
Douglas Macmillan Hospice	01782 344300
	www.dmhospice.org.uk
Electricity (Emergency)	0800 40 40 90
	www2.nationalgrid.com
Fillybrook House Family Dental Practice	01785 812412
	www.fillybrookhouse.co.uk
Gas (Emergency)	0800 111 999
	www2.nationalgrid.com
Harrison Denture Clinic	01785 811812
	www.hdcl.biz
Katharine House Hospice	01785 254645
	www.khhospice.org.uk
Macmillan Cancer Support	01785 816892
	www.macmillan.org.uk

**Are you a
Useful Number
not listed here?**

**Then let us know
for the next edition**

email your details to

hello@st15directory.com





Stone Recycling Centre

Beacon Rd / Opal Way
Stone Business Park, Aston ST15 0NN

Tel: 0300 111 8000

Email: recycling@staffordshire.gov.uk

WINTER OPENING HOURS (GMT) 27/10/2024 until 29/03/2025

Monday and Tuesday - Closed
Wed, Thursday & Friday 9am - 5pm
Saturday and Sunday 9am - 5pm

SUMMER OPENING HOURS (BST) 30/03/2025 to 30/10/2025

Monday and Tuesday - Closed
Wed, Thursday & Friday 9am - 6pm
Saturday and Sunday 9am - 5pm

www.staffordshire.gov.uk/environment

Malcolm Gray Opticians	01785 851015 www.mganda.co.uk
Mansion House Surgery	01785 815555 www.mansionhousesurgery.nhs.uk
Peter Bowers Opticians.....	01785 813902 www.peterbowers.co.uk
Police, Fire, Ambulance	999
Regency House Dental Practice	01785 815818 www.regencydental.co.uk
Royal Stoke University Hospital	01782 715444 www.uhnm.nhs.uk
Samaritans Stafford	01785 243333 www.samaritans.org
Severn Trent Water (Emergency)	0800 783 4444 www.stwater.co.uk
Stafford & District Access Group	01785 605187 www.sdag.org.uk
STING (MS Support)	07847 872635 www.sting.org.uk
Stone & District Stroke Club	01785 812027
Stone Alzheimer's Drop in Centre	01785 603707
Stone Community Hub.....	01785 812417 www.stonecommunityhub.org
Stone Dental Care	01785 818284
Stone Osteopaths	01785 816481 www.stoneosteopaths.co.uk
Stone Physio	01785 819414 www.stonephysio.co.uk
Stone Friends of Cancer Research UK	01785 814473
Stone Lions Mobility Service	07929 010 152
Stone Pharmacy	01785 819999
Stone Police	0300 123 4455
The Green Community Bus.....	01785 814573
Trentside Clinic	01785 811471

Funeral Directors

Isobel Whittaker - Independent Funeral Services.....	01785 336722 www.iwfuneral.co.uk
Price & Stubbs	01785 812556 www.thefuneraldirectors.co.uk
Stone Co-operative Funeralcare.....	01785 813375 www.co-operativefuneralcare.co.uk

Stafford Crematorium

The Cemeteries and Crematorium are open to the public on the following days:

October to March

Monday to Saturday - 9.00am to 4.30pm
Sunday and Bank Holidays - 10.00am to 4.30pm

April to September

Monday to Saturday - 9.00am to 8.00pm
Sunday and Bank Holidays - 10.00am to 8.00pm

For out of hours booking (for cremations and burials) or security of the site please call

07970 532687
www.staffordbc.gov.uk/bereavement

Miscellaneous numbers

CAB - Staffs South West Citizens Advice Bureau.....	03444 111 444 www.staffswcab.org.uk
MP Sir Gavin Williamson CBE	01902 846616 www.gavinwilliamson.org
Oak Tree Farm Project	01889 505653 www.oaktreefarm.uk.net
Registrar of Births, Deaths and Marriages	0300 1118001 www.staffordshire.gov.uk
Stafford Borough Council	01785 619000 www.staffordbc.gov.uk
Stone Library	0300 111 8000 www.staffordshire.gov.uk
Stone Recycling Centre	0300 111 8000 www.recycling@staffordshire.gov.uk
Stone Town Council	01785 619740 www.stonetowncouncil.gov.uk
Staffordshire Past Track	01889 881388 www.staffspasttrack.org.uk
Staffordshire Venture	07790 864474 www.staffordshireventure.com
The Stone & Eccleshall Gazette Magazine.....	07514 967890 www.stonegazette.com

Schools

Alleyne's Academy	01785 354200 www.alleynesacademy.co.uk
Christ Church Academy.....	01785 334900 www.christchurchacademy.co.uk
Christ Church C.E. First School	01785 336545 www.christchurch-stone.staffs.sch.uk
Conexus Tuition	07826 968703 www.conexustuition.co.uk
Manor Hill First School	01785 812418 www.manorhillfirst.co.uk
Oulton CE (VC) First School	01785 354100 www.ulton.staffs.sch.uk
Springfields First School.....	01785 337310 www.springfieldsfirstschool.org.uk
Pirehill First School	01785 334970 www.pirehill.staffs.sch.uk
St. Dominic's Priory School	01785 814181 www.stdominicspriory.co.uk
St. Dominic's RC (A) Primary School	01785 354070 www.st-dominics-catholic.staffs.sch.uk
St. Michael's CE First School	01785 334930 www.stmichaelsstone.org.uk
Tittensor C.E. (VC) First School.....	01782 372539 www.tittensor.staffs.sch.uk
Walton Priory Middle School	01785 550040 www.waltonpriory.staffs.sch.uk



Pre-schools, Playgroups & Activities



Aston Playgroup07870 443452

Aston by Stone Toddler Group01785 812862

Balance & Beam01782 214452

www.balanceandbeam.co.uk

Chuckle Productions07837 741510

www.chuckleproductions.org

Christ Church Parent & Toddler Group01785 286093

Come into Play01785 286882

www.comeintoplay.co.uk

Create & Play Toddler Group (At the Crossing Community Centre)

find us on Facebook: Create & Play - Stone

Elmhurst House Day Nursery.....07837 006 006

www.elmhursthousedaynursery.co.uk

Flip Out Trampoline Centre.....0845 450 9553

www.flipout.co.uk

Kids Planet01785 813528

www.kidsplanetdaynurseries.co.uk

Gust Swim School01785 817534

www.swimteaching.co.uk

Little Stars Child Care07907 695356

www.littlestarschildcare.org.uk

Manor Hill First School Nursery.....01785 812418

www.manorhillfirst.co.uk

Meaford Day Nursery01785 812578

www.meaforddaynursery.com

Meaford Fields Day Nursery01785 814788

www.meafordfields.co.uk

Mumbles01889 508123

www.mumblesdaynursery.co.uk

Oulton Little Bears Playgroup07708 733806

www.netmums.com/local/l/little-bears-playgroup-cic

Poppets Day Nursery01785 812420

Smarty's01785 817974

www.smartysdaynursery.com

St. Dominics Pre-School01785 814181

www.stdominicspriory.co.uk

Swynnerton & District Pre School Playgroup.....01782 796214

Clubs & Organisations

Air Training Corps - Stone.....	01785 257804
	www.stoneaircadets.co.uk
Best Kept Village Competition	01785 242525
	www.staffs.org.uk
Girlguiding, Stone & Eccleshall Division	01785 851663
	sheila.slaney@btinternet.com
Girlguiding, Stone Outward Division	01889 270757
	www.stoneoutward.co.uk
Aston	01785 812744
Oulton	01785 817080
Yarnfield	01785 615305
Stone & District Scouting	
District Commissioner	01782 644838
District Chair	01785 851558
District Secretary	01785 814326
Aston & Little Stoke	01785 814084
Oulton	01785 813430
Stone 1st	01782 372670
Stone 2nd (St Dominic's)	01782 372670
Stone 5th (St Michaels)	07792 737992
Yarnfield	01785 760437
Stone Scout and Guide Band	07853 362734
Local Groups in Stone District see staffordshirescouts.org.uk	
Guide Dogs for the Blind	01785 813473
	www.guidedogs.org.uk
Inner Wheel Club of Stone	01785 812438
Rotary Club of Stone & District	01785 760120
	www.stonerotary.org
Royal Air Force Association - Stone	01889 505094
	www.rafa.org.uk
Royal British Legion - Stone Branch	01785 605132
	01782 796426
	www.britishlegion.org.uk
Royal British Legion - Womens Section	01785 812572
	www.rblws.org.uk
Soroptomists	01785 814376
St. John Ambulance	07737 752558
	www.sja.org.uk
Stafford & Stone Young Enterprise.....	07960 055 448
	www.young-enterprise.org.uk
Staffordshire ACF Stone Detachment	01785 257804
	www.armycadets.com
Staffordshire Wildlife Trust - Stone District	01785 815136
	www.wildlifetrusts.org
Stone Bell Ringers (St Michaels)..... Peter Burgess	07921 944841
Stone Bridge Club.....	01782 396869
	www.bridgewebs.com/stone
Stone Carnival	www.stonecarnival.org
	info@stonecarnival.org
Stone Central Good Companions	01785 815104
Stone Common Plot Trustees	01785 814568
Stone Community Hub.....	01785 812417
	www.stonecommunityhub.org
Stone Food & Drink Festival	01785 526007
	www.stonefooddrink.org.uk





Stone Historical & Civic Society	01785 817980
	www.staffordshireheritage.org.uk
Stone in Bloom	07736 413097
	www.stoneinbloom.com
Stone Lions	0845 833 8478
	www.e-clubhouse.org/sites/stonelionsuk
Stone Lions Mobility Service.....	07929 010 152
Stone & District Probus Club	01785 613966
	www.probus.org
Stone Ramblers.....	www.stoneramblers.org.uk
Stone Round Table	01782 372372
	www.roundtable.co.uk
Stone Trefoil Guild	01785 819752
Stone and District u3a (<i>University of the Third Age</i>)	01785 819703
	secretary@stoneu3a.net
	www.stoneu3a.btck.co.uk
Stone WI (Aston by Stone).....	01785 615662
	www.sfwl.org
Stone Young Farmers	01889 270835
	www.staffsyoungfarmers.org.uk
Stone Youth Cafe	01785 812417
Talking Newspapers Stafford & Stone	01785 813683
	staffordandstonetn.org.uk
The Womens Institute (Oulton).....	01785 813222
Towns Womens Guild Stone Central	01785 812561
	www.the-tg.com
Walton Good Companions	01785 815882
	www.waltoncommunity.org

Sport & Leisure

Alleyne's Sports Centre	01785 815715
	https://activeukleisure.com/alleynes-sports-centre
Barlaston Golf Club	01782 372867
	www.barlastongolfclub.co.uk
Crown Wharf Theatre	info@crownwharftheatre.org.uk
	www.crownwharftheatre.org.uk
Flip Out Trampoline Centre.....	0845 450 9553
	www.flipout.co.uk
Groove Academy	01785 413230
	www.grooveacademy.co.uk
Inner Wheel Club of Stone	01785 814444
Innringers Handbells	01782 392621
	www.theinnringers.co.uk
Little Stoke Cricket Club	01785 812558
	www.littlestoke.play-cricket.com
Oulton Folk Dance club	01785 813412
Oulton Watercolour Society	01782 857548
	www.facebook.com/Oulton-Watercolour
Oulton Yoga Club	01782 372324
Rooftop Studios.....	01785 761233
	www.rooftopstudios.co.uk
Stafford and Stone Canoe Club	01785 812729
	staffordandstonecc.co.uk
Stone Acro	07971 862594
Stone Badminton Club	stonebadclub1@gmail.com
	www.facebook.com/StoneBadmintonClub
	www.stoneclub.leaguerepublic.com
Stone Choral Society	01785 812921
	www.stonechoral.org.uk
Stone Chrysanthemum & Dahlia Society	01785 812097
Stone Cricket Club	01785 813068
	www.stone.play-cricket.com
Stone Crown Bowling Club	07706 814906
	www.stonecrownbc.co.uk

Stone Fencing Club	01782 595910
	www.stonefencingclub.co.uk
Stone Flower Club	01785 255617
Stone Garden Club	01785 812097
Stone Golf Centre	01785 760868
	www.stonegolfcentre.co.uk
Stone Golf Club	01785 747030
	www.stonegolfclub.co.uk
Stone Hockey Club	01785 814409
	www.stonehockeyclub.co.uk
Stone Lawn Tennis and Squash Club	01785 815429
	www.sltc.org.uk
Stone Male Voice Choir	01782 394655
Stone Master Marathoners	01785 818734
	www.stonemm.co.uk
Stone Recorded Music Society	01785 817402
Stone Revellers Musical Theatre	07917 192988
	www.stonerevellers.org.uk
Stone Rugby Club.....	07831 460438
	www.pitchero.com/clubs/stonerufc
Stone Table Tennis Association	01782 621678
Stone Tennis & Squash Club	01785 815429
	www.sltc.org.uk
Stone Town Band	07768 781159
	www.stonetownband.org.uk
Stone Watercolour Class	01785 615240
Stone & District Begonia Society	01785 812300
Stone & District Swimming Club	01785 816783
	www.sadsc.co.uk
Stone Wheelers Cycling Club	01785 615250
	www.stone-wheelers.co.uk
Swynnerton Park Cricket Club	01782 796382
The Ishta Centre	01785 616010
	www.ishtacentre.co.uk
Walton Youth Club	01785 354108
	www.youthbox.info
Westbridge Park Fitness Centre	01785 619600
	www.freedom-leisure.co.uk

Music Venues

Crown Wharf.....	01785 550450
	www.joulesbrewery.co.uk
Granvilles	01785 816658
	www.granvilles.st
Swan Inn	01785 815570
	www.swaninnstone.co.uk
The Crown & Anchor.....	01785 814343
	www.crownandanchorstone.com
The Fitzherbert Arms.....	01782 796782
	www.fitzherbertarms.co.uk
The Red Lion Inn	01785 286991
	www.redlionstone.pub





Churches

All Saints Church, Moddershall	01785 812669
	www.christchurchstone.org
Christ Church (C of E)	01785 811990
	www.christchurchstone.org
Church at The Crossing (formerly Stone Baptist) ..	01785 785066
	www.risingbrook.org/thecrossing
Jehovah's Witnesses Stone Congregation	01785 286031
Religious Society of Friends (The Quakers)	01785 814129
	www.staffsquakers.org/Stone.htm
St. John's Methodist & United Reformed Church	01785 814813
	www.stjohnschurchstone.org.uk
St John The Evangelist Church	01785 812669
	www.christchurchstone.org
Holy Michael Archangel	01785 813951
	www.stdominicstone.org.uk
Our Lady of the Assumption	01782 796677
St Mary's Swynnerton	01782 796564
St Marys Abbey, Oulton	01785 812049
St. Michael & St. Wulfad's Parish Church	01785 812747
	www.stmichaelschurchstone.co.uk
St. Saviours	01785 812747
	www.achurchnearyou.com/church/4519/
The Immaculate Conception & St. Dominic's	01785 813951
	www.stdominicstone.org.uk

Community Rooms

Christchurch Centre	01785 811990
	Christchurch.centre1@btinternet.com
St. Dominic's Social Centre	07917 824625
St. Michael's Community Hall	01785 814134
	www.stmichaelshall.co.uk
Stone Heritage Centre	01785 594767
	www.stonetowncouncil.gov.uk
Stone Station Community Centre	01785 619740
	www.stonetowncouncil.gov.uk
The Crossing Community Centre	01785 785066
	www.risingbrook.org/thecrossing
The Frank Jordan Centre	01785 619740
	www.stonetowncouncil.gov.uk
Walton Community Centre	01785 811653
	www.waltoncommunity.org

Village Halls

Aston by Stone Village Hall.....	astonbystonevillagehall@gmail.com
Fulford Village Hall.....	01782 388784
	www.fulfordvillagehall.org.uk
Hilderstone Village Hall	07810 332559
	www.hilderstone.org.uk/villagehall.php
Moddershall Village Hall.....	01785 811123
	www.stoneruralparishcouncil.btck.co.uk/VillageHall
Oulton Village Hall	01785 816017
	www.oulttonstone.org.uk
Swynnerton Village Hall	01782 796652
	www.swynnerton.org.uk
Yarnfield Village Hall	01785 760437
	www.yarnfieldvillagehall.co.uk

Eating Out

Aston Marina	01785 819702
	www.astonmarina.co.uk
BEAR.....	01785 819 053
	www.bemorebear.co/stone
Blanc NRI	01782 372 866
	www.blancnri.co.uk
BOD Stone.....	01785 817946
Cavalli.....	01785 816161
	www.cavallistone.co.uk
Crown of India.....	01785 814911
Granvilles	01785 816658
	www.granvilles.st
Little Seeds	01785 818925
	www.littleseedsstone.co.uk
Moddershall Oaks	01782 399000
	www.moddershalloaks.com
Ovilash	01785 813137
	www.theovilash.com
Pasta di Piazza	01785 813214
	www.pastadipiazza-italiana.co.uk
Poste of Stone	01785 827920
The Red Lion.....	01785 286991
	www.redlionstone.pub/index
Roo's Cocktail Bar	01785 819988
	www.rooscocktailbar.com
Smoke & Rye	01785 501254
	www.smokeandrye.net
Spot Gate Inn	01889 505277
	www.spotgateinn.co.uk
Stonehouse Hotel	01785 815531
	www.bespokehotels.com/stonehousehotel
Ten Green Bottles.....	01785 812692
	business.facebook.com/TGBStone
Thai Lanna	01785 819000
	www.thailanna.co.uk
The Artisan Boutique & Kitchen	01785 815948
	www.theartisanboutique.co.uk
The Butchers Block.....	01785 413409
	www.the-butchers-block.co.uk
The Crown & Anchor	01785 814343
	www.crownandanchorstone.co.uk
The Crown Hotel	01785 747477
	www.crownhotelstone.com
The Dog and Doublet Inn	01889 508331
	www.doganddoubletsandon.co.uk
The Green Man.....	01889 505310
	www.greenmanmilwich.com
The Greyhound Inn.....	01889 508263
	www.greyhoundinn.info
The George & Dragon	01785 748787
	www.georgeanddragonmeaford.co.uk
The Mill Restaurant and Hotel	01785 818456
	www.themillrestaurant.org.uk
The Secret Tea Room.....	01785 747110
The Star Inn	01785 813096
	www.starpub.co.uk
The Three Crowns	01785 819516
	www.vintageinn.co.uk/thethreecrownsstone
The Wayfarer	01785 811023
	www.thewayfarerstone.co.uk





Takeaways

Blanc NRI	01782 372 866
Cavalli.....	01785 816161
Chilly Dum.....	01785 596567
Clover Cafe.....	01785 747950
Crown of India	01785 814911
Domino's Pizza.....	01785 812222
Dragon Palace	01785 819088
Flames.....	01785 816600
Flaming Wok.....	01785 815280
Glorious	01785 811911
Golden Stone	01785 812515
Hot Wok	01785 815280
Millies	01785 811063
Oatcakes & Milkshakes.....	01785 818807
Old Road Fish & Chip Shop	01785 815030
Ovilash Takeaway	01785 813137
Piccolos Pizza	01785 819555
Priory Fish Bar	01785 819992
Proven Pizzeria.....	01785 817007
Red Rooster	01785 747050
Stonefield Fish Bar	01785 815030
Stone Kebab House	01785 812499
Subway Stone	01785 812977
Sunnyhill Chinese Takeaway	01785 286755
Thai Lanna.....	01785 819000
Turkish Delight.....	01785 812499
Valleys Fast Food	01785 812929
Walton Fish Bar	01785 811553

Taxi services

A Cabs.....	01785 556 614
Secure cabs.....	01785 812 805
Smartcars.....	01785 288 999
Star Private Hire.....	01785 822 822

Places to stay

Stonehouse Hotel & Restaurant	01785 815531
www.bespokehotels.com/stonehousehotel	
The Crown Hotel	01785 747477
www.crownhotelstone.com	
The Mill Restaurant and Hotel	01785 818456
www.themillrestaurant.co.uk	

The Small Print ...

The information contained in this directory is for general information purposes only. The information is provided by The Stone Gazette Ltd, and while we have endeavored to ensure the information is correct, we make no representations or warranties of any kind, express or implied, about the completeness, accuracy, reliability, suitability or availability with respect to the directory or the information, products, services, or related graphics contained in the directory for any purpose.

Any reliance you place on such information is therefore strictly at your own risk. In no event will we be liable for any loss or damage including without limitation, indirect or consequential loss or damage, or any loss or damage whatsoever arising from loss of data or profits arising out of, or in connection with, the use of this directory and its website.

If telephone numbers or any other details have subsequently changed or are incorrect, please email hello@st15directory.co.uk or let us know in writing to the Stone Gazette Ltd, 23 Horton Drive, Stafford ST16 1FB and we will make the amendments in the next edition.



Stone

Town Council



Stone Town Council is the local council representing the urban area of Stone. It comprises eighteen elected Councillors, five representing St Michael's Ward, five representing Stonefield and Christchurch Ward, five representing Walton South Ward and three representing Walton North Ward.

Council and committee meetings are held in the Council Chamber at 15 Station Road, Stone, normally on the first and third Tuesdays of each month. Details of all meetings are posted outside the Council offices and on the notice board in the High Street. Members of the public are welcome to attend meetings and, with prior notice to the Town Clerk, address the Council on issues related to Council business.

Stone Town Council provides services for the people and town of Stone. These services include the provision of community facilities, such as the Frank Jordan and Stone Station community centres, allotment sites at Newcastle Road and Mount Road and the Crown Meadow Nature Reserve and amphitheatre.

The Frank Jordan Community Centre has been internally renovated, and offers modern meeting/party facilities with a fully equipped kitchen and private parking, all protected by CCTV. The Stone Station Community Centre is based in the former Stone Station building and also offers a high standard of accommodation for meetings, events or parties in one of Stone's most iconic buildings.

In December 2024 the Council opened the new Heritage Centre, which forms part of the exciting redevelopment of Crown Wharf.

Investing in and working to promote a vibrant town and encourage visitors is a key Town Council priority. In order to support this, the Council organises regular events such as the Town Market, and the monthly Craft Market, together with town centre events such as the Music Festival, the Classic Car Event and the St. George's

Day celebration. Christmas lights are provided in the High Street and at Walton, with the Council's annual switch-on event being one of the highlights of the year. The High Street environment is enhanced by the Council's provision of hanging baskets and bunting along the High Street, and newly refurbished noticeboards and fingerposts throughout the town.

The Council provides bus shelters, benches, litter bins and dog bins throughout the area and takes responsibility for the upkeep of many local amenities and planted areas. It also provides grants and other support to help charitable and community organisations such as the Stone Community Hub, supports various festivals, and Council staff supply daily support and advice to local residents.

By considering the impact of every planning application, the Council seeks to develop and conserve the town, and the approval of its Neighbourhood Plan in May 2021 will help the Council to shape and protect the future of Stone for years to come.

The Town Council's market operates on Tuesdays, Fridays and Saturdays with its Craft and Collectables market on the third Saturday of each month. In addition, Stafford Borough Council operate a thriving Farmers' Market in the town on the first Saturday of each month alongside the Town Council market.

For enquiries related to the Town Council's markets, or for bookings at the Frank Jordan Community Centre or Stone Station Community Centre, please contact the Council office, on 01785 619740 or email bookings@stonetowncouncil.gov.uk

*Pictured here are the current eighteen Town Councillors.
Up to date details can be found on the Council's website at*

www.stonetowncouncil.gov.uk

STONEFIELD AND CHRISTCHURCH WARD



Andrew Best

M: 07852 777531

[andrew.best@](mailto:andrew.best@stonetowncouncil.gov.uk)

[stonetowncouncil.gov.uk](mailto:andrew.best@stonetowncouncil.gov.uk)



Tom Kelt

M: 07855 051144

[tom.kelt@](mailto:tom.kelt@stonetowncouncil.gov.uk)

[stonetowncouncil.gov.uk](mailto:tom.kelt@stonetowncouncil.gov.uk)



Philip Leason

T: 01785 817980

[philip.leason@](mailto:philip.leason@stonetowncouncil.gov.uk)

[stonetowncouncil.gov.uk](mailto:philip.leason@stonetowncouncil.gov.uk)



Rob Kenney

T: 07980 591719

[robert.kenney@](mailto:robert.kenney@stonetowncouncil.gov.uk)

[stonetowncouncil.gov.uk](mailto:robert.kenney@stonetowncouncil.gov.uk)



Ian Fordham

T: 07801 575625

[ian.fordham@](mailto:ian.fordham@stonetowncouncil.gov.uk)

[stonetowncouncil.gov.uk](mailto:ian.fordham@stonetowncouncil.gov.uk)

WALTON SOUTH WARD & WALTON NORTH WARD



James Battrick

M: 07515 665589
james.battrick@stonetowncouncil.gov.uk



Angie Burgess

M: 07702 831 684
angie.burgess@stonetowncouncil.gov.uk



Jill Hood

M: 07736 413097
jill.hood@stonetowncouncil.gov.uk



Amber Mottershead

M: 07845 160597
amber.mottershead@stonetowncouncil.gov.uk



Nancy Powell

M: 07725 023196
nancy.powell@stonetowncouncil.gov.uk



Kerry Dawson

M: 07442 264552
kerry.dawson@stonetowncouncil.gov.uk



Jonathan Powell

M: 07966 382 931
jonathan.powell@stonetowncouncil.gov.uk



Jason Metters

M: 07597 501320
jason.mettters@stonetowncouncil.gov.uk

ST MICHAELS WARD



Lin Davies

T: 01889 505094
lin.davies@stonetowncouncil.gov.uk



Robert Townsend

T: 07783 383572
robert.townsend@stonetowncouncil.gov.uk



Bev Kenney

bev.kenney@stonetowncouncil.gov.uk



Clive Thornicroft

M: 07808 815204
clive.thornicroft@stonetowncouncil.gov.uk



Jim Davies

T: 01889 505094
Work: 01889 505011
jim.davies@stonetowncouncil.gov.uk

Stone Town Council

15 Station Road, Stone, ST15 8JP

Tel: 01785 619740

Fax: 01785 619741

clerk@stonetowncouncil.gov.uk

www.stonetowncouncil.gov.uk

Staffordshire County Councillors for Stone Town and Stone Rural

Stone Town

Councillor
Jill Hood

Party: Independent

Division: Stafford
- Stone Urban

Parish: Stone Town



Stone Rural

Councillor
Ian Parry

Party: Conservative

Division: Stafford
- Stone Rural

Parish: Barlaston ; Fulford ;
Hilderstone ; Milwich with
Fradswell ; Sandon and
Burston ; Stone Rural



Mobile: 07736 413097
email: jill.hood@staffordshire.gov.uk

Phone: 01785 276121
Mobile: 07831 510381
Email: ian.parry@staffordshire.gov.uk

Stafford Borough Councillors for the parishes of Swynnerton and Oulton, Milwich & Barlaston



Swynnerton and Oulton

Councillor James A Nixon
7 Walnut Tree Farm,
Ash Lane, Yarnfield,
Stone ST15 0NQ
T: 07855 295 917
jnixon@staffordbc.gov.uk



Councillor Roy James
Hawthorns, Moss Lane
Yarnfield ST15 0PW
T: 01785 760880
rjames@staffordbc.gov.uk



Milwich

Councillor Frances Beatty
MBE, JP, ARAGs
T: 01785 240667
M: 07877 896 466
fbeaty@staffordbc.gov.uk



Councillor Karine Aspin
Stafford Borough Council,
Civic Centre, Riverside,
Stafford ST16 3AQ
T: 07498 325 374
kaspin@staffordbc.gov.uk



Barlaston

Councillor
Gareth E Jones
Whistlers,
6 Tittensor Road,
Barlaston,
Stoke on Trent
ST12 9DN
T: 01782 372349
ejones@staffordbc.gov.uk

Your councillor is the person elected every 4 years to represent your area. They can help if you are dissatisfied with a council service by advising or directing you to someone who can help sort out your problem and can sometimes progress the case on your behalf.

This is often done in advice surgeries where you can meet with the councillor for your ward and discuss your problem. As community leaders they put forward proposals to improve their ward, which may include bringing together different community groups to develop a case for change.



Parish Clerks for the Parishes of Hilderstone, Milwich with Fradswell, Sandon and Burston, Stone Town Council, Stone Rural, Swynnerton, Yarnfield & Cold Meece



Hilderstone

Nikola Evans - Clerk for Hilderstone Parish Council

45 Thorn Close, Brereton, Rugeley, Staffs WS15 1TA
Tel: 07971226170 Email: clerk@hilderstone.staffslc.gov.uk

Website: <https://hilderstone.org.uk>

Milwich with Fradswell,

Caroline Burnitt (Clerk)

E-mail: clerk@milwichfradswellparishcouncil.gov.uk
www.milwichfradswellparishcouncil.gov.uk



Sandon and Burston

Ginny Gibson

Email: clerk@sandonburston.staffslc.gov.uk
Phone: 01889 566393
www.sandonandburstonpc.org.uk

Stone Town Council

Mr L Trigg Town Clerk,
Stone Town Council
15 Station Road,
Stone ST15 8JP
01785 619740

clerk@stonetowncouncil.gov.uk



Stone Rural

Lucy Davies

Clerk to Stone Rural Parish Council
01785 811123 / 07811 375623
stoneruralparishcouncil@yahoo.com

Swynnerton

Mrs Kay Ong (Clerk)

clerk@swynnertonparishcouncil.org.uk



Yarnfield & Cold Meece Parish Council

John Fraser - Parish Clerk
07546 456771
ycmclerk@gmail.com

<https://www.ymc-pc.org.uk/>

How To Become A Local Councillor

A parish council is the tier of local authority closest to its community as it elects representatives from within that community. Parish councils are democracy on your doorstep. Anyone can stand as a candidate provided they meet the qualification requirements or you can find out more by contacting the local borough electoral services department.

You should be:

- Aged over 18.
- A British, Commonwealth citizen, or Euro-national citizen (who is a registered elector)
- Resident for 12 months prior to the day of election, either in the parish or within 3 miles of the boundary.
- Occupied land or premises for 12 months as owner or tenant – either in the parish or within 3 miles of the boundary
- Had a principal place of work – either in the parish or within 3 miles of the boundary.

You cannot become a councillor if:

- You hold a paid office with the council.
- If you are subject to a bankruptcy restrictions order or an interim order creates disqualification which dates from the judgement or execution and generally ends one year after the relevant order is made.
- If you have within five years before the election or since election been convicted in the United Kingdom, the Channel Islands or the Isle of Man of any offence and been sentenced to not less than three months imprisonment (whether suspended or not) without the option of a fine.
- Imprisonment probably includes any type of custodial sentence.
- This disqualification begins when the ordinary period for making an appeal is finally dismissed or abandoned or fails for want of prosecution.

You can get further information from the Staffordshire Parish Councils' Association website at

<https://spcaonline.org.uk>



COMMUNITY CENTRE

FRANK JORDAN

LARGE OPEN SPACE / MEETING ROOM /
FREE PARKING / KITCHEN FACILITIES



LICHFIELD ST, STONE, ST15 8NA



FOR BOOKINGS, VIEWINGS OR MORE
INFORMATION PLEASE CALL

01785 619740 OR

EMAIL

BOOKINGS@STONETOWNCOUNCIL.GOV.UK





COMMUNITY CENTRE

STONE STATION

VENUE EXCLUSIVITY / SMALL BREAKOUT ROOMS
KITCHEN FACILITIES / OUTDOOR COURTYARD



STATION APPROACH, STONE, ST15 8ER



FOR BOOKINGS, VIEWINGS OR MORE
INFORMATION PLEASE CALL

01785 619740 OR

EMAIL

BOOKINGS@STONETOWNCOUNCIL.GOV.UK





Stone
Town Council

CONTACT US

heritagecentre@stonetowncouncil.gov.uk
01785 594767

STONE HERITAGE CENTRE

SHOWCASING STONE TOWN'S
REMARKABLE HISTORY &
PRESENTING FASCINATING
EDUCATIONAL RESOURCES TO THE
STONE COMMUNITY



OPEN ON
THURSDAY
FRIDAY
SATURDAY
11.A.M - 4.P.M

 13 NEWCASTLE STREET, STONE, ST15 8JU

ST15

2024 IN PICTURES



Tittensor Bowling Club celebrating 75 years of the club



Pirehill First School Support Children In Need



Bag packing for Rusty



Groundworker of the year 2023, Dave Vickers



Laila with the winning entry



Team members from James Du Pavey, Stone and Aston Marina's No.26 Restaurant celebrate the new partnership



Sebbie with the statue in his honour



Stone Leisure Centre Wins National Award



Luke with his award



Station volunteers Barbara and Rachel receive Community Champions Award from North Staffs CRP Chair, Mike Wilmott.



AEDdonate receives The King's Award for Voluntary Service



Stone Scooter Club celebrating 10 years of Fun!



Rooftop Studios raises over £1,500 for Pudsey



Guides get the baking bug!



Members of The Inner Wheel Club of Stone & District Celebrate their National Club's 100th Birthday



Lions Quiz Night Fun



Stone Ramblers become TV Stars



Stone's Ryan claims top spot in the SEIB Winter Novice Championship Qualifier



Stone Lions Club celebrate 45 years service





Dance Nuvo students shine at World Trampolining Championships



Walton pupils fundraiser 2024



The U3A photography group



Stone Scribblers



Sir Gavin Williamson with Councillor Philip Leason (left) and Mike Ward, a volunteer who helps maintain the mausoleum



Stones' Ruby Twigg lands a place at prestigious performing arts school



Stone's Aaron takes the gold!



Celebrating at Stone Train Station



Mordearg pops in to promote the show



Crown Wharf Theatre - cinema screen



Bridge pair take title



Crown Meadow Litter Picking Champions



Futures2gether Fundraising evening



Will Jenkins bags a brace on the opening date at Snetterton



River Trent bridge still awaits repair



Guide dogs guided by the guides!



Stone Heritage Centre opening



*Age Concern fundraisers
Meet the team - Rose, Neil, Claire, Jill and Janice*



Beating the Drum at Stone Stroke Club



Stones' Classic Car Show



The Darlo under demolition! 1685 - 2024



Quakers for Peace - 400th Anniversary



Stone Chrysanthemum and Dahlia Garden Club



A smooth approach at Stone Station



Building a better future at Stone Hockey and Rugby Club



Stone Puppet Tree Jamboree 2024



Celebrating Olympic Triumph: Paris 2024

*Joe Clarke, Dan Bingham and Adam Burgess
who all returned home with a clutch of
Silver Olympic Medals.*

ST15

Family Life



A Cabs

Stone Based Taxi Company

01785 556614

RELIABLE, FRIENDLY TAXI SERVICE - SERVING OUR COMMUNITY EVERY DAY

- Covering Stone and the surrounding areas
- Airports, stations, hospitals etc.
- Advanced booking only
- Prices available on request
- We accept card payments/contactless



Antique & Collectors Fair

As seen on **BBC** Bargain Hunt

STAFFORD SHOWGROUND

2025 DATES

15TH & 16TH FEBRUARY 19TH & 20TH APRIL
13TH & 14TH SEPTEMBER 8TH & 9TH NOVEMBER

Up to 300 stands in 3 Halls

A range of Furniture, Art, Silver, Glass,
Porcelain, Jewellery, Toys, Books,
Retro and Modern Collectables

ADMISSION

Everyone over 14	£4.00
Under 14	FREE
First Day 8.30am to 10am	£5.00
Saturday 10am to 5pm	£4.00
Sunday 10am to 4pm	£4.00

FREE Parking, Catering, Disabled friendly, Dogs welcome

Prestwood Centre, Weston Road A518, Stafford ST18 OBD 5 mins J14 M6



www.numberoneevents.com

P.O. Box 3190, Stafford ST16 9LF

Office 01785 66 02 36 Mobile 07775 48 44 55



Balanced Holistic Energies

Want to bring positive change
to your quality of life...

Why not try Natural Therapies?
Reflexology | Reiki | Energy Field Healing

Healthier Living for Mind & Body
Reduce Stress | Improve Sleep | Release Tension
Aid Fertility | Support with PMS/ Menopause
Restore Balance | Relieve Anxiety | Aid Digestion
Aid Relaxation | Improve Wellness

Treatments

Reflexology	£35
Reflexology & Reiki	£40
Reflexology & Aromatherapy	£40
Aid Fertility Reflexology	£35
Reiki Healing	£35
Energy Field Healing	£45



Ruth Allen-Wheatley

Find out more on instagram:
@balancedholisticenergies

Contact me on:
07968534083

Email me at:
balancedholisticenergies
@gmail.com

All treatments are suitable for adults and children (*aged 8 and over*). I am DBS cleared, and offer appointments during both daytime and evening hours. The treatments are provided from my tranquil log cabin, and I can also provide mobile services if required.

LOUISE CURLEY MCFHP MAFHP FOOT HEALTH PRACTITIONER



- Nail Cutting
- Corns
- Callous
- Cracked Heals
- Thickened Nails
- Ingrown Nails
- Athletes Foot
- Diabetic Foot Care

£35
per visit

Providing high quality
professional foot care
and treatment in the
comfort of your own
home.



CONTACT ME
07791 522299



EMAIL
louisefoothealth@icloud.com

GJG TRAVEL

Going The Extra Mile For You!



GJG Travel are specialists in transporting people to and from all major UK airports and Cities including Manchester, Birmingham, London, Leeds and Liverpool.

Offering you an affordable and convenient way to travel, whether it's for business or pleasure, we are your number one choice.

Why Choose Us....

- 24 Hour Service to and from all Major Airports at very competitive prices
- One Inclusive Price with No Hidden Extras
- Pay by card or cash
- We offer a reliable, professional and friendly journey on all airport transfers

8 Seater Taxi Service

Private Hire Travel

Fully Licensed with
Stafford Borough Council

Fully Insured

Airport Transfers
For 1 – 8 People

Advanced Bookings Only

Competitive Rates



Facebook
GJG Travel

www.gjgtravel.com Email john@gjgtravel.com
Call 01785 526 042 or Mobile 07909 714806

LIFTING Staffordshire for Over 45 years!

MAIN DEALER FOR
DOOSAN



H&F Lift Trucks

Old Joules Works, Stone, Staffs ST15 8JU

01785 815356

www.hflifttrucks.co.uk

FREEphone 0800 298 8790 Established 1976



Unit 20
Emerald Way
Stone
ST15 0SR

We buy your used and new clothing,
paired footwear and handbags.

Mon, Tues, Thurs, Fri, Sat
10am - 4pm

The items that we purchase will be used again
and must be clean and damage free. Please
visit our website for further information.



Visit Our Website :
Cashforclothesstaffs.co.uk



More Information :
01785 291993

HILDERSTONE GARAGE LIMITED

CARS AND VANS

LIGHT COMMERCIALS

MOT TEST STATION

DIAGNOSTIC

**WE ALSO
BUY & SELL
VEHICLES**

MOTORBIKE MOT'S ONLY £29

CAR MOT'S ONLY £49

LIGHT COMMERCIALS £58



VOSA
Authorised
Testing Facility



tsj
APPROVED CODE
TRADING STANDARDS UK



RMI



IGA
INDEPENDENT GARAGE ASSOCIATION



Find us on
Facebook

Find out why people are coming to us from up to 50 miles away - sometimes even further!
It's the "family" effect - since 1988 - with five "Hammonds" directly involved on a day to day basis -
service at its best with the very latest diagnostic tools for every car, van and motorbike.

Hall Lane, Hilderstone, ST15 8SQ Tel: 01889 505656 hilderstonegarage.co.uk

ISOBEL WHITTAKER

INDEPENDENT FUNERAL SERVICES



STONE'S ONLY INDEPENDENT FUNERAL DIRECTOR

OUR SERVICES

- 24 HOUR PERSONAL SERVICE
- PRIVATE CHAPEL OF REST
- FUNERAL PLANS
- MEMORIAL WORK
- TRADITIONAL AND ALTERNATIVE OPTIONS
- DIRECT CREMATION FROM £1000
- FULLY INCLUSIVE PACKAGES



WHAT OUR FAMILIES SAY

"HER KINDNESS ESPECIALLY AT MY TIME IN NEED MAKES ISOBEL SO VERY SPECIAL TO ME.
ISOBEL TRULY IS A HERO IN MY LIFE."

"THE CARE THAT WE AS A FAMILY RECEIVED FROM IZZY OVER THIS REALLY AWFUL PERIOD WAS WONDERFUL. MY BEAUTIFUL MUM'S FUNERAL WAS FLAWLESS."

"IZZY, WAS TRULY AMAZING. SHE WAS EXTREMELY HELPFUL THROUGHOUT THE ENTIRE PROCESS AND WENT ABOVE AND BEYOND TO ENSURE THAT EVERYTHING WENT SMOOTHLY AND OURS WISHES HONOURED."

01785 336 722



60 PIREHILL LANE, WALTON, STONE, ST15 0JN
WWW.IWFUNERAL.CO.UK





E-BIKES



MOUNTAIN BIKES



CHILDREN'S BIKES



ACCESSORIES



SERVICING

- Stocking bikes from leading brands such as Mondraker, Haibike, Lapierre, Raleigh, MiRider, Squish children's bikes.
- Servicing and Repairs carried out to the highest standard
- Free Help & Advice, Quality Workmanship Guaranteed
- Collection Service *(charged at an hourly rate)*
- Certified Bosch, Shimano, Yamaha, Fazua and TQ e-bike approved repairers.
- Suspension Servicing & Repairs
- Biking accessories including Helmets, Clothing and Shoes, Tyres, Cleaning and Components.
- Pay in 3 Interest-Free Instalments with Klarna Pay
- Cycle to work scheme with all the leading companies.



Open 6 Days a Week at
Unit F, Whitebridge Industrial Estate Stone ST15 8LQ
Tel. 01785 503 753 www.midlandsmtb.co.uk



**panda
press.**

**use your local graphic design
+ printing company**

Brochures | Business Cards | Stationery | NCR pads
 Stickers & Labels | Invitations | Posters | Flyers Banners
 Signage | Books | Bespoke Printing | Graphic Design
 & Much More...

You think it. We design + print it.

Panda Press (Stone) Ltd, 1 Newcastle Street, Stone, Staffordshire, ST15 8JU
 Tel: 01785 815110 | Email: studio@pandapress.net | www.pandapress.net

10% OFF
orders over £100
 with this advert

Treat your pet like royalty with Posh Paws

Posh Paws of Stone

At Posh Paws of Stone, we're a team of experienced groomers with a passion for all this dogs. Our salon location is perfectly located and we cater for all types of dogs both big and small.

Whilst recently rebranding, our team remain very much the same, and our dedication and devotion to our customers remains the ethos of our business.

We have a range of products in store from raw dog food and treats, natural treats, and a range of dog and cat products to help with home grooming.

Our skilled team of groomers are available to answer any questions you might have no matter how complex.



**DEDICATED TO PROVIDING YOUR DOG OR CAT
WITH THE HIGHEST STANDARD OF DOG GROOMING**

We can offer • Full Groom & Style • Bath & Brush • Deshedding
• Pamper Packages • Hand Stripping • Nail Clipping & Pawdicures
• Puppy & Cat Grooming • Puppy Microchipping
• Emmi-Pet Teeth Cleaning • Self Service Bathing

Posh Paws of Eccleshall

At Posh Paws of Eccleshall, we are dedicated to providing your dog or cat with the highest standard of dog grooming.

With over 30 years of experience in the industry, our team of skilled dog groomers have a passion for delivering an exceptional service for your furry friends.

Our recently refurbished salon means we have significant space to ensure we cater for all sized dogs in a perfect and unique setting. With dedicated space for small dogs upstairs, and specialist equipment for larger dogs downstairs, Posh Paws is the perfect salon to cater for all types, sizes and ages of dogs.



40 Eccleshall Road, Stone St15 0HN T: 01785 308431
10 Stafford Street, Eccleshall ST21 6BH T: 01785 556155
www.doggroomerstafford.co.uk





Salon 36

Unisex Salon




matrix retail

For Chemical and Mechanical Damage Repair Packages available

SALON 36 at WALTON PRECINCT, ST15 0HN
CALL 01785 813294 | TEXT 07917 824625
 Open Tuesday 9-3 Wednesday 8.30-5
 Thursday 9-7 Friday 8.30-5 and Saturdays 8-2pm

FUN FITNESS & DANCE CLASSES...!

THE HAPPY
VIBE



Timetable in Stone & Stafford

MONDAY

9:30-10:15 **MiSiT STRONG** Stone
 13:30-15:00 **Beginners Line Dancing** Stafford
 18:30-19:20 **Clubbercise** Stone

TUESDAY

9:30-10:30 **Pilates for All** Stone
 11-12 **Intermediate Line Dancing** Stone
 13:30-14:45 **Seated Exercise & Social** Stone
 18:00-19:00 **Beginners Line Dancing** Stafford
 18:20-19:10 **Boogie Bounce Revolution** Stone
 19:30-20:30 **Pilates for All** Stone



WEDNESDAY

12:15-13:15 **Beginners Line Dancing** Stone
 13:30-15:00 **Beginners & Improvers Line Dancing** Stone

THURSDAY 18:30-19:20 **Clubbercise** Stafford

FRIDAY

9:30-10:15 **MiSiT STRONG** Stone
 11:30-12:45 **Seated Exercise & Social** Stafford

Fitness, Fun & Friendship!

Call or text Trish 07711 115462
www.thehappyvibe.co.uk



Focused Intensity Training

Fitness classes and personal training that combines strength, functional fitness and HIIT methods to ensure the best possible workout.



SWC - The Fitness Family that makes a difference



**"I don't use machines,
I build them"**

 www.swcfitness.co.uk

 [www.facebook.com /SWCFitness](https://www.facebook.com/SWCFitness)

 07807 006239

	MONDAY	TUESDAY	WEDNESDAY	THURSDAY	FRIDAY	SATURDAY	SUNDAY
6:00-7:00AM	HIIT		HIIT		HIIT		
7:00-8:00AM		HIIT		HIIT			
9:30-10:30AM	HIIT	HIIT	HIIT	HIIT	HIIT	HIIT	HIIT
10:45-12:45		OPEN GYM TEA AND TALK					
17:30-18:30PM	HIIT	HIIT	SAS (Strength and Stamina)	HIIT	HIIT (18:00-19:00)		
19:00-20:00PM	HIIT	HIIT		HIIT	Strength (19:15-20:15)		
	Coach	Shane	Charlotte	Dan	Michael (COVER)	Multiple Coaches	

SWC Fitness - Unit 25, Emerald Way, Stone ST15 0SR

Could you make a **lifesaving** difference?



**Ray helps save lives
by volunteering just
a few hours a week.**

**Could you spare your time
to make a future lifesaving
mission possible?**

The benefits of volunteering with Midlands Air Ambulance Charity

- Training in CPR and Bleed Control
- Meet new people • Build confidence
- Airbase visits and meet the crew
- Part of a team • Have fun
- Give back to your community
- Celebrations • Flexible hours

Get in touch:

volunteer@midlandsairambulance.com

Telephone: 0800 8 40 20 40

midlandsairambulance.com/volunteer



Ages 16 and above



**Midlands
Air Ambulance
Charity®**

Registered Charity Number 1143118

ST15

Education





Christ Church Academy

A Middle School for children aged 9-13
Old Road, Stone, Staffordshire, ST15 8JD



Minnie
Our school dog



"Pupils at Christ Church thrive" OFSTED 'Good' 2022

"The curriculum and extra-curricular offer is exceptionally rich" SIAMS 2020

Specialist subject teachers who deliver a broad and balanced curriculum whilst maintaining a strong focus on the core subjects of English, Maths and Science.

Excellent pastoral care which supports children to achieve, excel and enjoy learning. Before and after school provision available.

A strong Christian ethos with values such as trust and friendship underpinning an atmosphere of challenge, support and acceptance.

SIAMS 'Excellent' 2020

Visits to the Academy are warmly welcomed

Please call the school office to arrange your visit: 01785 334900



Fully equipped science laboratories, specialist technology workshops, computer rooms offering programming and coding from the outset, well-resourced library, strong links with the parish church, specialist dance and drama studio, extensive sports, music and extra-curricular opportunities.



Artsmark
Silver Award
Awarded by Arts
Council England



BUILD CONFIDENCE AND EMPOWER PROGRESS

EXAM TUITION IN STAFFORD & STONE

GCSE

English, Maths
and Science

SATs

English and
Maths

Years 3 - 9

English and
Maths

*KS3 Science
on Saturdays

Timetable info



Scan me

**Qualified
Teachers**

Over
800
pupils tutored
in schools
& sessions

**FREE
TRIALS
AVAILABLE**

STAFFORD & STONE

3 Local Venues:

- St John's Church Hall, Stafford, ST16 3RP
- Walton Community Centre, Stone, ST15 0EQ
- Berkswich Methodist Church, Stafford, ST17 0LH

- ✓ Highly skilled, qualified teachers
- ✓ Small groups (max 6 learners)
- ✓ Committed to safeguarding
- ✓ Choose the subjects your child needs



Fiona Simon
Principal Director



07826968703

fiona@conexustuition.co.uk



Conexus
Tuition
Stafford and Stone

Proud,
Independent,
Respectful,
Enthusiastic,
Happy & Healthy
Individuals who
Love learning and
Love life



IMPORTANT ADMISSION INFORMATION FOR SEPTEMBER 2025

We have a dedicated area on our school website for September 2025 admissions, which will provide you with a wealth of information about Pirehill First School.

Access through: Homepage/Children/Year Pages/
September 2025 Intake

Please remember we are only a phone call away and would be delighted to answer any of your questions.

If you would like to arrange a visit to see our fantastic school in action please contact the school office to book.

PIREHILL FIRST SCHOOL *AND FOREST SCHOOL*



Headteacher: Karen Williamson-Smith

Tilling Drive, Walton, Stone, ST15 0AA Tel: 01785 334970

Email: office@pirehill.staffs.sch.uk Website: www.pirehill.staffs.sch.uk Twitter: @PirehillFirst



SPRINGFIELDS FIRST SCHOOL **ACHIEVING EXCELLENCE TOGETHER**

TEACHER LED PRE-SCHOOL FOR 3 TO 4 YEAR OLDS

PLACES AVAILABLE

(Children can start on their 3rd Birthday)

- HIGHLY QUALIFIED EXPERIENCED TEACHERS
 - OFFERING 30 HOURS CHILDCARE
 - SUPERB LEARNING ENVIRONMENT

www.springfieldsfirstschool.org.uk/pre-school

- LINKED TO SPRINGFIELDS FIRST SCHOOL
- EXCELLENT 'STEPPING STONE' TO STARTING SCHOOL
- BEFORE & AFTER SCHOOL CARE CLUB AVAILABLE ON SITE
- EXTENSIVE OUTDOOR AREAS INCLUDING FOREST SCHOOL
 - NURTURING ENVIRONMENT
- FOR AVAILABILITY IN OUR RECEPTION, YR1, YR2, YR3 & YR4 CLASSES PLEASE CONTACT SCHOOL

Come and visit our welcoming school at the heart of the local community.

Please phone 01785 337310 option 6 for an appointment

The Green, Yarnfield, Stone, ST15 0NJ Tel: 01785 337310

office@springfields-first.staffs.sch.uk • www.springfieldsfirstschool.org.uk
Headteacher: Alison Bagnall



DISCOVER
MORE



ST DOMINIC'S
PRIORY SCHOOL • STONE

A Catholic Independent Day School
Educating Children Ages 3 -16



www.stdominicspriory.co.uk

Tel: 01785 814181

[stdominicspriorystone](https://www.facebook.com/stdominicspriorystone)

37 Station Road, Stone, ST15 8ER



THE RURAL ENTERPRISE ACADEMY

"Educating, nurturing and inspiring
our future rural entrepreneurs."

Creating a culture that is kind,
where everybody can be successful."



- A specialised curriculum focusing on a range of academic and vocational subjects
- A key focus on visible learning, with feedback and the language of learning being at our core
- A number of transport routes offered to all areas around the school

enquiries@ruralenterpriseacademy.com | 01785 333360



ST15

Home & Garden



Boultons SKIPIHIRE

Covering All Of Staffordshire

**2 & 3 Tonne Mini Skips • 4 & 6 Tonne Midi Skips
8, 10 & 14 Tonne Large Skips,
Drop Doors For Easy Loading**

www.boultonsskiphire.co.uk

01785 330310 / 07971 566383

Moorfields Industrial Estate, Cotes Heath, Eccleshall



CANAL CRUISING COMPANY LIMITED

FOR ALL YOUR **CALOR** Gas

- CALOR GAS AND REGULATORS FOR BOATS
- PATIO HEATERS & BARBECUES
- ALL YOUR CAMPING & CARAVANNING NEEDS



**WE ALSO SELL COAL
LOGS & KINDLING**

Canal Cruising Company Limited
at Stone, Staffs ST15 8QN
Office & Boatyard (01785) 813982
mail@canalcruising.co.uk
www.canalcruising.co.uk

K's UPHOLSTERY & LEATHER FURNITURE REPAIR



**Antique &
Modern
Upholstery**

**Spring
& Frame
Repairs**

**Call 01785 851470 or
Mobile 07765 419367**
39A High St, Eccleshall, ST21 6BW

THE DOOR COMPANY

SUPPLIERS & INSTALLERS OF COMPOSITE, UPVC, PATIO & INTERNAL DOORS



We are Stafford's leading suppliers & installers of Solidor, Endurance & Rockdoor solid timber core composite doors. We have over 25 composite doors on display at our beautiful showroom!



The Door Company has a range of internal doors to choose from, along with a great choice of hardware.

We supply & install interior doors. We offer same day quotes & a full measuring service

Design your dream door

WWW.STAFFORDDOORCOMPANY.CO.UK TEL: 01785 211517
SHOWROOM: 8 WOLVERHAMPTON ROAD, STAFFORD, ST17 4BN

ENDURANCE
Solid & Secure Composite Doors

SOLIDOR
PREMIUM
INSTALLER

XL
Joinery

SOLIDOR
INSTALLER
OF THE
MONTH

lpd
DOORS

**ROCK
DOOR**

EAGO

PERFECT HOME SOLUTIONS

WE HAVE MOVED

Quality, Affordable Bathrooms, Kitchens, Bedrooms & Tiles
Combining Style and Innovation

Our Perfect Solutions are exclusively designed for you



Looking to upgrade your Bathroom, Kitchen or Bedroom?

Then visit the one stop shop for all your home solution needs.

Our **Brand New Showroom**, which is mobility friendly, is the biggest for miles, with **Over 60 Bathrooms and Cloakrooms, 10 Kitchens and 10 Bedrooms On Display!** Many are live displays, so you can really get a feel of the quality that's on offer.

Our **Tile Outlet** gives you hundreds of choices - with all the very latest fashions - or maybe you're looking for a more traditional look?

There's 100's of designs **IN STOCK to TAKE AWAY** the same day.

We offer a free design and consultation service, with evening and daytime appointments available.



Open 8am - 4pm Monday to Friday, 8am - 4pm on Saturdays, 10am - 4pm Sundays at
Eago Perfect Home Solutions Greyfriars Way, Stafford ST16 2RF
Call us today on 01785 244447 or come and take a look around



KITCHEN CARE STAFFORD

EST. 1991

BESPOKE FITTED INTERIORS

KITCHENS | BEDROOMS
MEDIA WALLS | HOME BARS
UTILITY ROOMS | APPLIANCES & *MORE*



Come and see us at our working showroom -
Unit 5, Ladfordfields Ind Est, Seighford ST18 9QL

SIEMENS

Get in touch today for your free quote
Call: 01785 282921 - Email: kitchencarestafford@gmail.com

R MOUNTFORD

IRONMONGERS

EST. 1934

FOR ALL YOUR HARDWARE & DIY NEEDS

Hardware
Tools
Plumbing
Electrical
Timber

Security
Gardening
Safety Wear
Power Tools
Decorating



Key Cutting

*Including
High Security Keys*

9 Lichfield Street, Stone

📞 01785 813261 📱

www.rmountfords.co.uk



S B K BUILDING SERVICES



We are the local company you can trust, with over 30 years experience in home renovation, offering in house CAD designs for kitchens, bathrooms and bedrooms. All our projects are completely on-site managed to the highest standards. We can take care of electrics, plastering, gas, plumbing and decoration.

Specialising in:

- Home Renovations
- Garage Conversions
- Bespoke Joinery
- Conservatories and Orangeries
- Kitchens
- Bathrooms
- Bedrooms

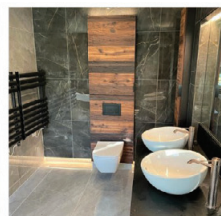
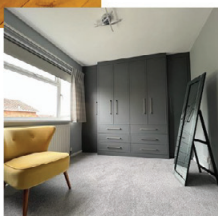
FREE NO
OBLIGATION
QUOTES

CONTACT

call: 07811384754

email: stevebkitchens@gmail.com

www.sbkitchensandhomerenovations.com



Find us on

STAFFORD FIREPLACES & STOVES LTD

Your premium retailer for
Stove, Gas and Media
Wall Fires with over 80
live displays

Celebrating 25 years

Stove Specialists | Media Wall Experts | Installation



- Family Run Business
- 35 Years Experience
- New Ownership
- Updated Showroom

39 Gaol Road | Stafford | ST16 3AR

T 01785 211 554 | www.staffordfireplaces.co.uk

Open Monday - Saturday 9:30am-5pm





**STONE BUILDERS
MERCHANTS
LTD**



SHOP LOCAL & SAVE MONEY

from the big multinational chain stores !



FULLY STOCKED TRADE STORE! WE STOCK - UNDERGROUND DRAINAGE / PAVING SLABS / BRICKS / BLOCKS / GUTTERING AND SPOUTING / EXTERIOR TIMBER / INTERIOR TIMBER / ROOFING FELTS / DECKING / SLEEPERS / PLASTER BOARDS AND PLASTER PRODUCTS / DECORATIVE AGGREGATES / BUILDING AGGREGATES HARDWARE AND FIXINGS / SHEET MATERIALS LADDERS / LOFT INSULATION / TIMBER POSTS ALL LANDSCAPING PRODUCTS EVERYTHING YOU NEED FOR YOUR HOME AND BUILDING PROJECT !

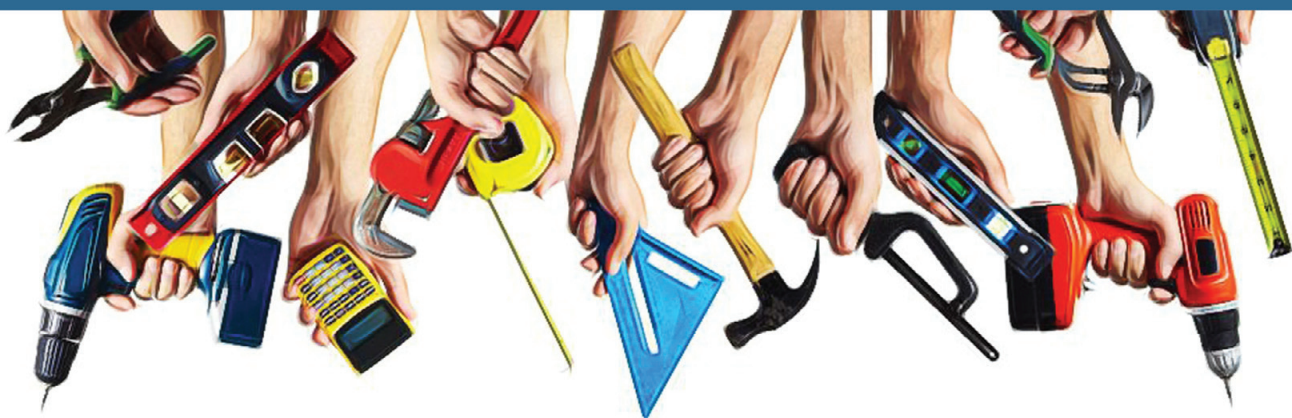


**FREE
LOCAL
DELIVERY**

**Unit 34 Whitebridge Industrial Estate, Stone, Staffordshire, ST15 8LQ
01785 816009 www.stonebuildersmerchants.co.uk**

ST15

Home Services



DECC-KING

DECKING • SEATING • LIGHTING • PLANTERS
PROFESSIONAL DECKSMITHS



A

ALAN BENNETT
 Landscapes & Maintenance



Patios - Driveways - Fencing/Gates - Decking
Drainage - Digger/Operator Hire - Retaining

T: 01785 213522 M: 07813 892408

www.stafford-decking.co.uk

www.alanbennettlandscapes.co.uk

DRY ORGANIC CARPET & UPHOLSTERY CLEANING

WE USE THE MOST POWERFUL DEEP CLEANING DRY ORGANIC SYSTEM IN THE WORLD WHICH MEANS ZERO DRYING TIME!

Using our low moisture system - Solvent and Detergent free
 We shrink the drying times - *not the furniture!*



- Our system will:
- Deep clean and remove soil & spots
 - Lift and revive matted carpet pile
 - Leave a clean, fresh scent
 - Reduce allergens
 - Leave carpets dry & ready to use

For a FREE QUOTE contact Ian Plimmer

Tel: 01785 814272 or 07973 860781

www.dry-carpet-cleaning.co.uk



A.M. Landscape & Contract Gardener

Full garden makeovers big or small

- Installers of porcelain • Natural stone
- K rend render • Block paving • Brick walls
- Resin bound driveways by vuba
- Fencing, Gates & Acoustic sound barriers
- Decking both wood and composite
- Pergolas and other timber structures
- Turf installation & hedge cutting

Free no obligation quote • Fully insured family business



07929 114207

ASLK

Plumbing & Handyman Services
 of Yarnfield

Specialists in

Plumbing Repairs and Bathrooms
 Also Tiling, Flooring, General Maintenance



t: 01785 760403 m: 07971 077283

www.stoneplumber.co.uk askplumbing@gmail.com

GREENHILL ROOFING

Slating & Tiling Since 1985

NEW ROOFS and REPAIRS

- Tiled and Flat Roofs
- Leadwork, Chimneys
- Guttering
- Mortar Pointing
- Roof Windows
- Sky Tunnels

"The name to trust with all your roof requirements!"

Tel: 01785 286818 / 07863 340996



www.greenhillroofing.com



DEB'S HOMECARE

professional home cleaning & ironing

Commercial & Domestic
One Off Cleans

Weekly / Fortnightly Cleans
Competitive Prices

Cleaning Materials Supplied

Fully Insured - Free Quotes

WE CAN EVEN DO YOUR SHOPPING

ESTABLISHED 2007

Call 07990 810 351

or 07841 636 062

Have Your Windows Steamed Up?

Replace just the failed glass unit!

**Finance
Options
Available**

**Looking to upgrade
your existing
windows and doors?
UPVC, composite or
aluminium.
Contact us
NOW!**



TRUSTMARK
Government Endorsed Quality

**Checka
trade**



All glazing backed by our

**25
YEAR
GUARANTEE**



Get a FREE Quote

Social distancing in operation

Faulty locks, handles or hinges?



**Priority freephone
0800 61 21 118**

www.cloudy2clear.co.uk

Love Your Home - Protect Your Windows - Save Money





Covering Stone, Eccleshall,
Stafford, Gnosall and the
surrounding villages.

- Tree Services
- Hedge Cutting
- Grass Cutting
- Garden Services

Fully-qualified and insured,
EG Trees Garden Services
can take on your garden
project from tree felling to
hedge clipping, pruning to
waste removal.



Professional Tree & Hedge Services

www.egtrees.co.uk

T: 07796 004163 or 01785 665586



**KEEP IT LOCAL
...STONE BASED**

- Free quotation • New roofs and repairs
- Over 10 years experience
- Public liability insured

**CALL DAN THORLEY
07837 212873**



- New roofs and repairs
- Lead work
- Guttering
- Fascia
- Soffit
- Chimneys
- Flat roofs
- Roof windows
- Sky tunnels
- Dry verge systems
- Bird deterrent
- Roof & gutter clean
- Solar panel cleaning
- Flat roof conversions

GRASS CUTTING SERVICE

**STONE BASED
LOCAL AND RELIABLE**

**CALL MICHAEL
07811 440471**



J. HODSON
PROFESSIONAL WALL & FLOOR TILING

ALL TYPES OF TILES FITTED
DOMESTIC/COMMERCIAL

07572 434010
Jhodsontiling@outlook.com



HAYWOOD EXTERIOR CLEANING



**We Specialise In
Commercial Property
Cleaning & Maintenance**

- Exterior Cleaning Specialists
- Expert Roof Cleaning Service
- Over 150 ★★★★★ Reviews Across Google & Facebook

**HAYWOOD
EXTERIOR CLEANING**

- Fully Insured
- City & Guilds Assured Softwash Technician
- PASMA Trained
- IPAF Trained



01785 291991



www.haywoodexterior.co.uk



Facebook.com/haywoodexterior

Johnson's **Plumbing** Services

The Complete Domestic and Commercial Plumbing Service

- 24/7 Call outs
- Bathroom and Kitchen Installations
- Mobility and Special Care Alterations
- Shower Specialist
- All Aspects of Tiling
- Karndean Flooring
- Minor Building/Maintenance Work
- Part P Electrical Work
- All Work Insured & Guaranteed



**Professional
Reliable
Free Quotes**

Tel: 01785 241628 Mobile: 07803 703510

Lynacres, 15 Whitgreave Lane, Great Bridgeford, Stafford, ST18 9SJ

E-mail: johnsonsplumbing@btconnect.com



**COVERING ALL RESIDENTIAL AND COMMERCIAL PREMISES
24HR SERVICE / FULLY INSURED / FAST & RELIABLE
CALL TODAY FOR A FREE SURVEY!**



**Pat Malpass
Senior Technician
07496 944 410**

info@malpasspestsolutions.co.uk

www.malpasspestsolutions.co.uk



BASED AT WHITEBRIDGE ESTATE, STONE



M L Wenlock Ltd
Landscaping and Groundworks Services

EXPERIENCED LAND MAINTENANCE SPECIALISTS

- Hedge Cutting
- Agricultural Services
- Private and Commercial
- Paddock Maintenance, Topping, Harrowing & Rolling
- Baling and Wrapping
- Spraying & Weed Wiping
- Chipper Services
- Tractor & Digger Work Including Drainage
- Garden & Ground Maintenance
- Decking • Turfing • Fencing
- Landscaping
- Shed Assembly & Shed Bases
- Patios • Garden Features
- Raised Borders
- Garden Clearance
- Groundworks
- Excavator Services
- Stem Injection Treatment for Japanese Knotweed



FREE NO
OBLIGATION
QUOTES

FAMILY RUN
COMPANY
Over 20 years' experience

NO JOB
TOO BIG OR
TOO SMALL

**LOCATED IN
SWYNNERTON**



City & Guilds

**FOLLOW US ON
facebook**

Mob: 07969 507573

E: markwenlockltd@gmail.com

Tel: 01782 796488

www.markwenlockltd.co.uk

We Care About the Details • Customer Satisfaction Guaranteed



All models of oven, hob, extractors
& microwaves cleaned to perfection

Range & Aga Specialists
Unique valeting process using
oven developed caustic
free products

**CALL US FOR A FREE
QUOTE/BROCHURE**

WE COVER THE STONE & STOKE AREAS

01782 850692
www.oven.co.uk

PC PLUMB PLUMBING & ELECTRICAL

Consumer units, Safety Inspections
Lights, Sockets, Fault finding

RELIABLE, LOCAL SERVICE

General Plumbing, Taps, Radiators,
Bathroom Installs, Heating controls



**Part P NAPIT
Certified
Electrician**

Contact: paul@pcplumb.co.uk
Mobile **07969 978 503**
Stone **01785 760 783**

www.pcplumbelec.co.uk
www.facebook.com/pcplumbelec

Online enquiries & bookings available
Credit and debit cards accepted

Need your Septic Tank Emptied?

Then contact A J Parton

A family run business since 1950



Septic Tank & Cesspit Emptying Service
Septic Tank Installations, Maintenance,
Cleaning & Desludging,
Soakaways, Sewage Treatment Plants
Drain Jetting & Unblocking, Repairs,
Maintenance & CCTV Surveys

Your local **Environment Agency licensed** waste carrier,

Call Andrew for a no obligation quote on
01782 791 305 or 07712 365 063
www.ajparton.co.uk

**TIME TO CLEAN
YOUR OVEN?**

**LET US DO THE JOB
YOU HATE**

AS SEEN
ON TV



- Ovens
- Grills
- Extractors
- Filters
- BBQs
- Microwaves
- Hobs
- Ranges
- AGAs

*"I'm delighted at how sparkly clean my oven and
hob look now! The cooker looks brand new again"*

**Call Martin or go online today
for your FREE QUOTE**



07932 195752
ovenclean.com

ovenclean
— LESS GRIME. MORE TIME —



- Stone Based, Family Run Business
- Fast and Efficient, Fully Insured
- Time Served Tradesmen, with over 36 Years Experience in the industry
- All Areas Covered Nationwide
- Commercial & Domestic Work & Insurance Work undertaken



**HIGHLY COMPETITIVE, TRY US,
WE WILL NOT BE BEATEN ON PRICE!**



Mobile: 07952 598 380 Office: 01785 816 701
stonescaffolding@yahoo.co.uk www.stonescaffolding.co.uk



Shelmore Timber

The Finest Timbers, Sustainably Sourced

Shelmore Timber stocks and mills some of the finest timber available in the UK. Our UK species timber is sustainably grown and sourced from our own managed mature woodlands on the Norbury Park Estate.



Premium Firewood
supplied locally in
2m³ loads.



Please **get in touch** for all your **hard** and **soft wood** or **Premium Firewood** requirements.

www.shelmoretimber.co.uk Call **01785 284 718** email sales@shelmoretimber.co.uk

Campions Buildings | Manor Drive | Norbury Junction | Stafford | ST20 0RL

WINDOWPAINS®

solving problems with upvc windows and doors



Steamed up Windows?

You don't need to have a whole new window
Just Replace the Glass

Window and Door Repairs

Locks • Hinges

Handles • Gaskets

*Stone, Eccleshall, Barlaston, Yarnfield,
Stafford and surrounding areas*

Call Simon for a FREE no obligation quote

01782 796207 or 07855 301071

email: windowpainsrepairs@gmail.com www.windowpains.co.uk

ST15

Professional Services & Property





AUSTIN & ROE

INDEPENDENT ESTATE AGENTS

BASED AT GRANVILLE SQUARE IN STONE

Austin & Roe is a family run business with properties available over the Stone and Eccleshall area.

We specialise in:

- Sales – Valuations
- Lettings – Hassle Free/Regulations Support
- Property Management
- In-House Mortgage Advisor

We look forward to discussing your property requirements.



MORTGAGE ADVISER



QUALIFIED ENERGY PERFORMANCE ASSESSOR



DETAILED FLOORPLANS



VIRTUAL REALITY PROPERTY TOURS



PREMIUM HIGH STREET OFFICE

Granville Square 75A High Street
STONE ST15 8AE
Tel: 01785 338 570

sales@austinandroe.co.uk
lettings@austinandroe.co.uk
www.austinandroe.co.uk



We buy any property in Staffordshire in any condition!



Jeffries

PROPERTY BUYERS

- ✓ One Phone call
- ✓ One Viewing
- ✓ One offer

For a guaranteed sale,
please call Ron on

 **01785 817113**
Jpbuyers.co.uk

Tax advice and accounting services for all businesses



**Your local accountants,
specialising in accountancy and tax
services for small business owners
throughout Stone and Staffordshire.**

With over **40 YEARS OF EXPERIENCE**
and a helpful, approachable team,
your business is in perfect hands.

Are you...

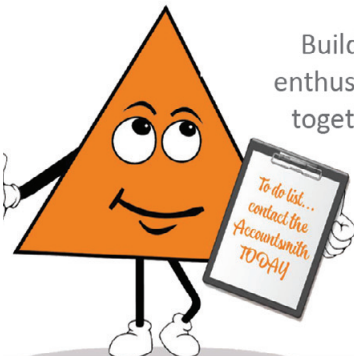


- Just starting up in business
- Have an established business
- A trades person seeking tax advice
- Expanding your business and needing to take on staff
- Have a second income and need to submit a self-assessment return



- Need advice on VAT, PAYE or Corporation Tax
- Want to set up your own Ltd Company
- Something on your mind that's related to your Income and Tax
- Sold a second property and need to submit a capital gains tax report

We provide a wide range of accountancy, bookkeeping and payroll services, helping to ensure your business is compliant and also helping you to grow your business.



Building long-term relationships with enthusiasm for understanding your goals, together with helping you understand and grow your business.

Often over a coffee
(or tea) and often with a giggle or two!



www.theaccountsmith.co.uk
info@theaccountsmith.co.uk or call **01782 479445**

 theaccountsmith  @theaccountsmith



Advertising with us could make a real difference to your business in 2025

THE STONE & ECCLESHALL Gazette

The Stone & Eccleshall Gazette is hand delivered bi-monthly to 13,400 homes in Stone, Eccleshall and the surrounding areas.

The Gazette and My Village Voice are both 'editorially led', and it's local editorial content that is at the heart of what we do. An abundance of quality, local editorial is the reason readers will keep a free magazine.

Some of our advertisers have been with us for over the 20 years we have been publishing, and on any given month, up to 80% were in the previous edition.



My Village Voice

My Village Voice is our sister publication, it has the same ethos as The Gazette, in terms of strong local editorial content, but is delivered to homes and businesses within villages to the south of Stafford.

5,400 copies are hand delivered bi-monthly to Acton Trussell, Bednall, Bradley, Brocton, Church Eaton, Colwich, Coppenhall, Dunston, Derrington, Haughton, Marston, Milford, Seighford, Great Haywood, Little Haywood and Walton on the Hill.

THE ST15 DIRECTORY

The ST15 Directory is an annual directory, produced by The Stone & Eccleshall Gazette.

10,000 copies are delivered each year in late January, to homes and businesses within the ST15 postcode area. B5 in size it has a strong laminated cover, making it perfect to keep all year round.

BOOK NOW FOR THE 2026 EDITION



Call us on 07514 967 890 or email: dan@stonegazette.com

www.stonegazette.com www.myvillagevoice.co.uk www.st15directory.co.uk



- Sole Traders
- Partnerships
- Limited Companies
- Audits
- VAT & Bookkeeping
- Business start ups
- Self assessments
- Personal tax service
- Payroll bureau
- SAGE Business Partner

We pride ourselves on being friendly & our qualified and experienced staff have experience in dealing with a variety of business consultancy issues.

01785 814 864

www.plantandcoaccountants.co.uk

PETER J PLANT F.C.A Senior Statutory Auditor



**Whitebridge
ESTATES**

*Join the Business Park
with a Village feel*



- Located just 100 metres from the A34 midway between junctions 14 and 15 of the M6
- Perfect for logistics
- Warehousing, commercial and office space to rent with flexible accommodation
- Manufacturing facilities with ability to adapt • File storage and retrieval facilities available
- Safe, secure and easily accessible • Peace of mind with 24 hour on site security and CCTV
- On site facilities including café, children's nursery and large free car parks

The owners and their management, maintenance and security teams are on site daily to ensure the estate runs smoothly and securely

Whitebridge Estates - Whitebridge Lane, Stone, Staffordshire. ST15 8LQ
Tel: 01785 817170 www.whitebridge.co.uk

JAMES DU PAVEY WINS BEST ESTATE AGENT GUIDE GOLD AWARD AGAIN!

The results are in and it's official,
James Du Pavey are **one of the
top estate agents in the country
since 2021!**

All 15,000
estate
agents in the
UK Assessed

JDP in
the top
2% of all
agents
in the
UK

All three
James Du Pavey
offices classed
as exceptional

James Du Pavey
INDEPENDENT ESTATE AGENTS

MULTI AWARD WINNING AGENT



Stone: **01785 814917** | Eccleshall: **01785 851886** | Nantwich: **01270 445678**